

3 Axle Platform Flat



3 Axle Platform Flat

KEY FEATURES



Overall length

13600mm

Overall width

2550mm

Gross Design Weight

EU:44,000Kg (44 Tons)

UK 39,000Kg (39 Tons)

Unladen Weight

9000Kg (9Tons)



3 Axle Platform Flat

KEY FEATURES



3no 9Ton 420 x 180 Axles

**Air Suspension complete with
Load Sensing Valve**

EBS & Air Line Braking

**800mm Demountable Solid
Headboard**

Pair of JOST Landing Legs

Rope Hooks & Ferry Rings

**6no premium branded
385/65 x 22.5 tyres**

1no stainless steel toolbox

**Rear Bulb Cluster Lights &
LED Side Lights**

28mm Keuring hardwood

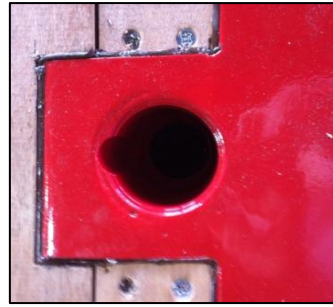
Optional Extras



Recessed D-Rings in Platform



3.5T Lashing Eye (Platform)



Laxo Sockets



Twist Locks



Galvanised Posts With Handles



Machine Stoppers



Machine Locker Bars



D-Rings on Chime



Outrigger Boards



Stepframe Container Leveller



8.1T Winch



Hardwood Cross Bearers



23T Alloy Ramps



Eco Mesh Ramps



Access Equipment Ramps



1m Wide Fliptoe Ramps

Optional Extras



5Ton Weight Bearing Headboard



Solid 600mm Static Headboard



Plastic Toolbox



Large Steel Toolbox



Stainless Steel Toolbox



Demountable Galvanised Timber Trav



Galvanised Post Carrier



Pull Out Access Ladder



Spare Wheel Carrier Underneath



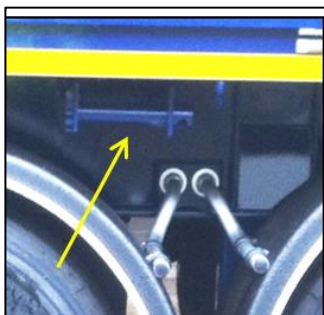
Spare Wheel on Tractor Headboard



Combine Wells with Covers



Rear Steer Axle



Spanset Winch



Wheel Chocks



Dropped Bed



Crib Sides Painted

Optional Extras



**Aluminium Demountable
Crib Sides**



Galvanised Crash Rail



Suzi Box on Headboard



Raise / Lower Valve



LED Hamburger Lights



Beacon Fitted



Flashing Strobe Light



**Wisem Working Spot
Lights**