

3 Axle Stepframe Low Loader "LOADED"



3 Axle Stepframe Low Loader "LOADED"

KEY FEATURES



3no 105km 10Ton 310 x 190 axles
Air Suspension complete with Load Sensing Valve & Raise Lower Valve
EBS & Air Line Braking

Rear Lift Axle

300mm galvanised tractor-bar headboard

2no hydraulic sliding flip toe ramps
L: 2440mm + 1200mm x W: 760mm

Pair of JOST Landing Legs
D - Rings & Rope Hooks

Galvanised outriggers in bed & beavertail

Pull out marker boards front & rear

12no premium branded 235/75 x 17.5 tyres

1no stainless steel toolbox

Rear Bulb Cluster Lights & LED Side Lights

28mm Hardwood on neck & 35mm hardwood on the bed

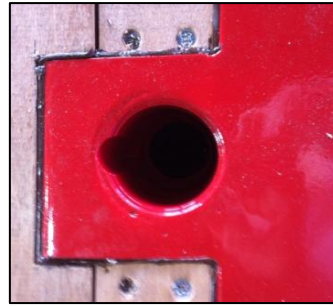
Optional Extras



Recessed D-Rings in Platform



3.5T Lashing Eye (Platform)



Laxo Sockets



Twist Locks



Galvanised Posts With Handles



Machine Stoppers



Machine Locker Bars



D-Rings on Chime



Outrigger Boards



Stepframe Container Leveller



8.1T Winch



Hardwood Cross Bearers



23T Alloy Ramps



Eco Mesh Ramps



Access Equipment Ramps



1m Wide Fliptoe Ramps

Optional Extras



5Ton Weight Bearing Headboard



Solid 600mm Static Headboard



Plastic Toolbox



Large Steel Toolbox



Stainless Steel Toolbox



Demountable Galvanised Timber Trav



Galvanised Post Carrier



Pull Out Access Ladder



Spare Wheel Carrier Underneath



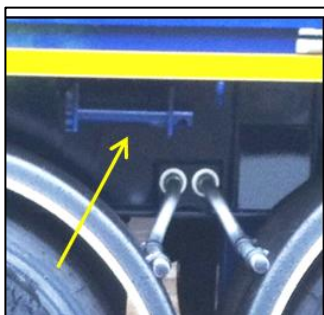
Spare Wheel on Tractor Headboard



Combine Wells with Covers



Rear Steer Axle



Spanset Winch



Wheel Chocks



Dropped Bed



Crib Sides Painted

Optional Extras



**Aluminium Demountable
Crib Sides**



Galvanised Crash Rail



Suzi Box on Headboard



Raise / Lower Valve



LED Hamburger Lights



Beacon Fitted



Flashing Strobe Light



**Wisem Working Spot
Lights**