

Cat 2 - 4 Axle Stepframe Low Loader Extender



4 Axle Stepframe Low Loader Extender

KEY FEATURES



2 no rear self tracking 4no
105km 12Ton 300 x 200 axles

Air Suspension complete with
Load Sensing Valve & Raise
Lower Valve

EBS & Air Line Braking

300mm galvanised tractor-bar
headboard

2no manual sliding ramps L:
2440mm x W: 760mm

Pair of JOST Landing Legs

D- Rings & Rope Hooks

Galvanised outriggers in bed &
beavertail

Pull out marker boards front
& rear

16no premium branded
235/75 x 17.5 tyres

2no steel toolbox in floor

Rear Bulb Cluster Lights &
LED Side Lights

28mm Hardwood on neck &
35mm hardwood on the bed

Chassis extends 6m with
700mm floater

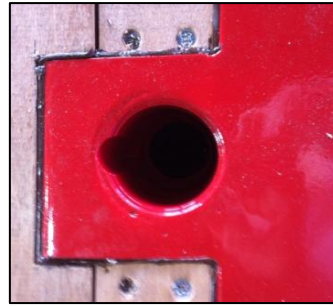
Optional Extras



Recessed D-Rings in Platform



3.5T Lashing Eye (Platform)



Laxo Sockets



Twist Locks



Galvanised Posts With Handles



Machine Stoppers



Machine Locker Bars



D-Rings on Chime



Outrigger Boards



Stepframe Container Leveller



8.1T Winch



Hardwood Cross Bearers



23T Alloy Ramps



Eco Mesh Ramps



Access Equipment Ramps



1m Wide Fliptoe Ramps

Optional Extras



5Ton Weight Bearing Headboard



Solid 600mm Static Headboard



Plastic Toolbox



Large Steel Toolbox



Stainless Steel Toolbox



Demountable Galvanised Timber Trav



Galvanised Post Carrier



Pull Out Access Ladder



Spare Wheel Carrier Underneath



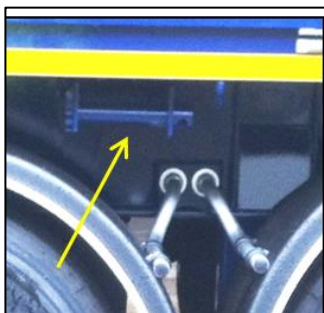
Spare Wheel on Tractor Headboard



Combine Wells with Covers



Rear Steer Axle



Spanset Winch



Wheel Chocks



Dropped Bed



Crib Sides Painted

Optional Extras



**Aluminium Demountable
Crib Sides**



Galvanised Crash Rail



Suzi Box on Headboard



Raise / Lower Valve



LED Hamburger Lights



Beacon Fitted



Flashing Strobe Light



**Wisem Working Spot
Lights**